



Dear **KIK** Business Partner,

We invite you to renew or start your partnership with KIK Partners in Education 2022-2023 school year campaign. With brighter days on the horizons for our community, we see our partnership as a great venue to strengthen, rebuild, or launch your connection to our school community.

Why partner with KIK? We believe by investing in our top schools, your partnership will build up our vibrant community which in turn will support our local businesses. Investing in KIK will also help your business:

- **Build awareness of your brand:** Your donation connects your business with over 10,000 people in the Greenbrae-Kentfield community, with 1,100 students, 750 families, 200 staff members served by the schools.
- **Strengthen existing client and customer relationships:** Kentfield schools families will feel connected to your business and more likely to frequent your business.
- **Give back to the community you serve:** Your business will be supporting our excellent public schools. Raising the quality of our schools raises the quality of our community.

How can you partner with KIK? Learn more about pledge levels and partner benefits by finding the document pictured to the left. Partner benefits vary based on pledge levels. For example, the Ruby Level at \$3500 reaches max sponsor benefits that include business promotions through:

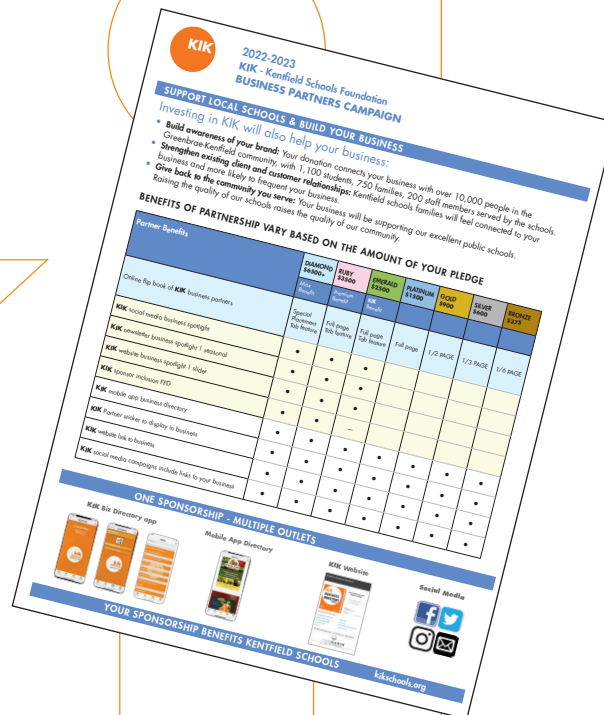
- Full page advertisement in KIK's online flip book
- KIK social media business spotlight
- KIK newsletter business spotlight
- KIK website business spotlight
- KIK sponsor inclusion Family Fun Day banner
- KIK mobile app directory
- KIK partner sticker to display in business

We see this as a year strengthening and growing and we hope our school community can count your business as one of our partners in the 2022-2023 school year.

One of our board members will be reaching out to you to answer any questions.

Thank you again for your support,

Laura Streater
KIK Partners for Education Chair



Kentfield Schools Foundation
750 College Ave
Kentfield, CA 94904
415.458.5140 tel
415.458.5137 fax
www.kikschools.org

2022-2023 Board

- Noah Wheeler
President
- Katharine O'Brien
Treasurer
- Kira Hallemeier
Annalyn Chargualaf-Peluso
Co-VP Communications
- Laura Streater
Amy Atherton
Janine Spaulding
Amy Barr
Vice Presidents
- Holly Myers
Secretary
- Annie Riedel
Website
- Dirk Hallemeier
V.P. Endowment
- Laurie Treganowen
Executive Director

- Lorin Bentley
Tiffani Broce
Monique Corren
Allison Crawford
Estelle Dick
Cassandra Edwards
Tory Riggs
Sarah Gukowsky
Barr Haney
Christina Holsberry Janzer
Evans Hoof
Kevin Krystofiak
Ladan LaFitte
Tristi Marshall
Matt Murawski
Allyson Perraca - Strohl
Emily Poague
Patrick Reid
Neda Rassouli
Alex Reinus
Tiffany Rowe
Oren Schetrit
Mark Schulman
Bryan Schultz
Joanna Stockton
Alison Wilkams
Allison Zweig

Laurie Treganowen
Executive Director
KIK - Kentfield Schools Foundation



2022-2023
KIK - Kentfield Schools Foundation
BUSINESS PARTNERS CAMPAIGN

SUPPORT LOCAL SCHOOLS & BUILD YOUR BUSINESS

Investing in KIK will also help your business:

- **Build awareness of your brand:** Your donation connects your business with over 10,000 people in the Greenbrae-Kentfield community, with 1,100 students, 750 families, 200 staff members served by the schools.
- **Strengthen existing client and customer relationships:** Kentfield schools families will feel connected to your business and more likely to frequent your business.
- **Give back to the community you serve:** Your business will be supporting our excellent public schools. Raising the quality of our schools raises the quality of our community.

BENEFITS OF PARTNERSHIP VARY BASED ON THE AMOUNT OF YOUR PLEDGE

Partner Benefits	DIAMOND \$6500+	RUBY \$3500	EMERALD \$2500	PLATINUM \$1500	GOLD \$900	SILVER \$600	BRONZE \$375
	Max Benefit	Premium Benefit	KIK Benefit				
Online flip book of KIK business partners	Special Placement Tab feature	Full page Tab feature	Full page Tab feature	Full page	1/2 PAGE	1/3 PAGE	1/6 PAGE
KIK social media business spotlight	•	•	•				
KIK newsletter business spotlight seasonal	•	•	•				
KIK website business spotlight slider	•	•	•				
KIK sponsor inclusion FFD	•	•	—				
KIK mobile app business directory	•	•	•	•	•	•	•
KIK Partner sticker to display in business	•	•	•	•	•	•	•
KIK website link to business	•	•	•	•	•	•	•
KIK social media campaigns include links to your business	•	•	•	•	•	•	•

ONE SPONSORSHIP - MULTIPLE OUTLETS

KIK Biz Directory app



Mobile App Directory



KIK Website



Social Media



YOUR SPONSORSHIP BENEFITS KENTFIELD SCHOOLS

kickschools.org



2022-2023 DONATION FORM
KIK-Kentfield Schools Foundation
BUSINESS PARTNERS CAMPAIGN



Renewal PLEASE SEND IN FORM
 New **DEADLINE JULY 8**

Solicitor Name: _____

CONTACT INFORMATION | Support Local Schools & Build Your Business

Name _____
 Business Name to Appear in Print _____
 Address _____
 City/State/Zip _____ Phone _____
 Email _____ Fax _____
 URL _____
 Signature _____

- Choose One Category Only**
- TAB Business Partners 22|23
 - Accommodations | Travel
 - Automobile Services
 - Beauty | Health | Fitness
 - Financial | Legal Services
 - General | Home | Garden
 - Kids | Sports | EDU
 - Promotion
 - Real Estate
 - Restaurants | Food | Beverages
 - Shopping | Retail

DONATION INFORMATION | Pledge Your Partnership

SUPPORT LEVEL	CHECK BOX	DISPLAY SIZE
DIAMOND	<input type="checkbox"/> \$6500 Max Perks	Flipbook Section Front Tab Feature Page Soc Med + more
RUBY	<input type="checkbox"/> \$3500 Max Perks	Flipbook Tab Feature Page Soc Med
EMERALD	<input type="checkbox"/> \$2500 kik Perks	Flipbook Tab Feature Page Soc Med
PLATINUM	<input type="checkbox"/> \$1500	Full Page
GOLD	<input type="checkbox"/> \$900	1/2 Page
SILVER	<input type="checkbox"/> \$600	1/3 Page
BRONZE	<input type="checkbox"/> \$375	1/6 Page
<i>Recognition Ad Use of kik Logo</i>	<input type="checkbox"/> \$350	<i>add an additional amount</i>

DISPLAY ART INFORMATION MUST SUBMIT ARTWORK BY JULY 22 FORM DUE JULY 8

- I will supply all artwork Please use same art as last year
- Same art, but minor text changes *Please provide color art for all ads
- Please create my art! \$50

PAYMENT INFORMATION | Required

Total amount to KSF for Ad plus Art \$ _____
 Check is enclosed Mail to: **kik**-Kentfield Schools Foundation | 750 College Ave | Kentfield, CA 94904
 Please Charge My Credit Card # _____ CSV# _____
 Signature _____ Exp. Date _____
 VISA MASTERCARD AMEX



kik—KENTFIELD SCHOOLS FOUNDATION
Partners for Education

Display Sizes 2022-2023

Artwork should be sent in **camera-ready PDF format**, sized accordingly.
Please send artwork to: **foundation@kentfieldschools.org**

Artwork that is not sent in the correct size or format may result in a graphics charge payable to an independent graphic design company.

<p>Tab Page Display Size: 5.75" x 7.75" ▼ Diamond \$3500 Color Feature Emerald \$2500 Color Feature</p> <p>Full Page Display Size: 5.75" x 7.75" Platinum \$1500 Color</p> <p>1/2 Page Display Size: 5.75" x 3.75" ▼ Gold \$900 Color</p> <hr/> <p>1/3 Page Display Size: 5.75" x 2.50" ▼ Silver \$600 Color</p> <hr/> <p>1/6 Page Display Size: ▼ 2.75" x 2.50" Bronze \$375 Color</p>	<p>Tab</p>
---	-------------------